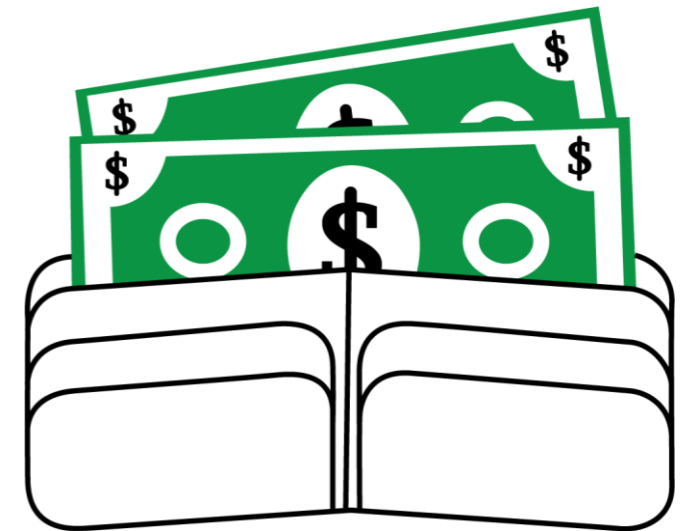
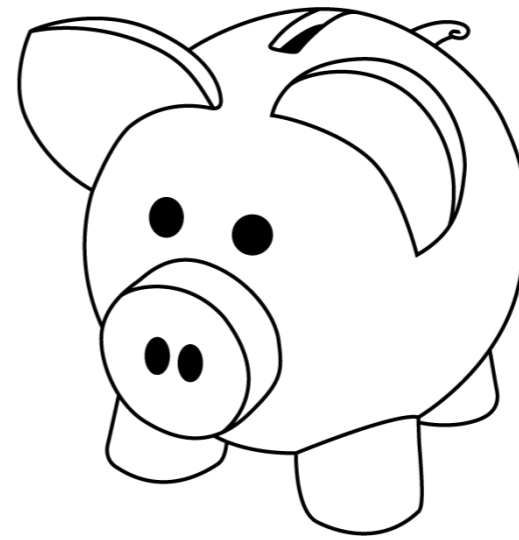


Make the Money Follow You: Diversifying Funding Models to Support Consumer Assistance





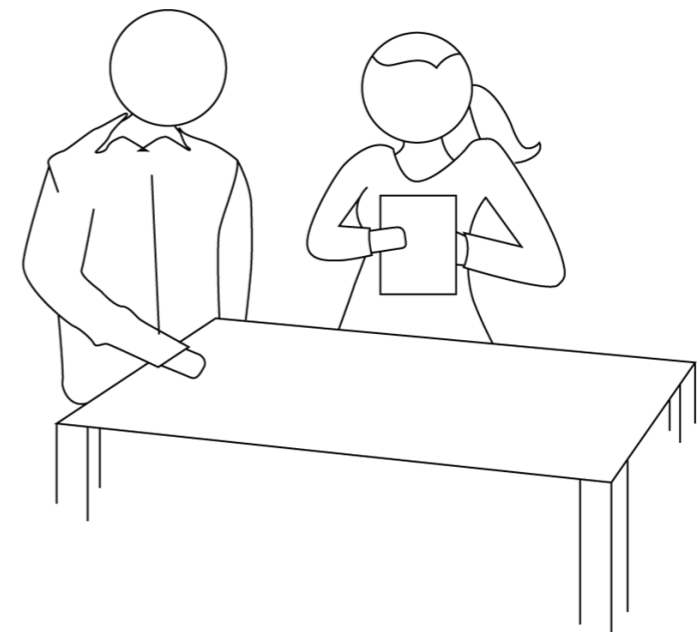
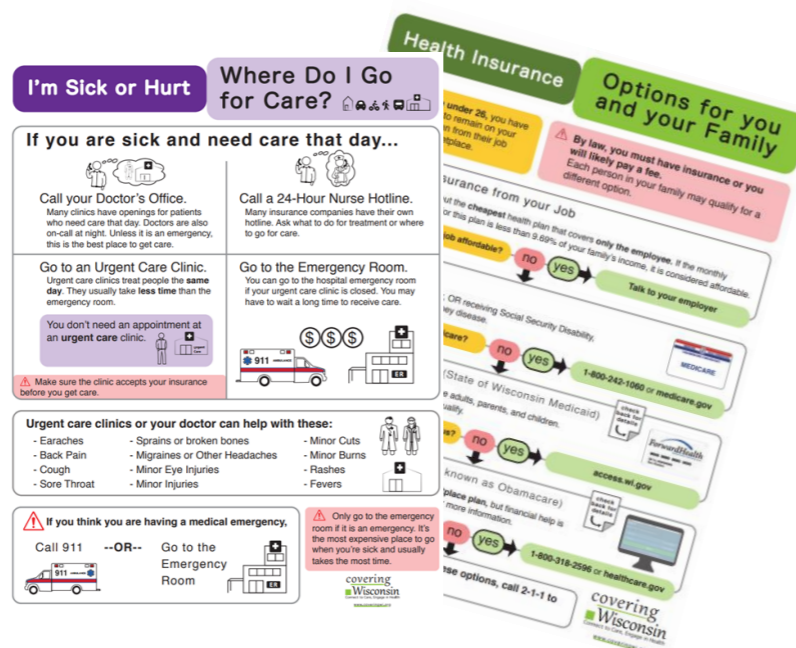
Caroline Gomez-Tom, MSW

Navigator Program Manager

cbgomez@wisc.edu

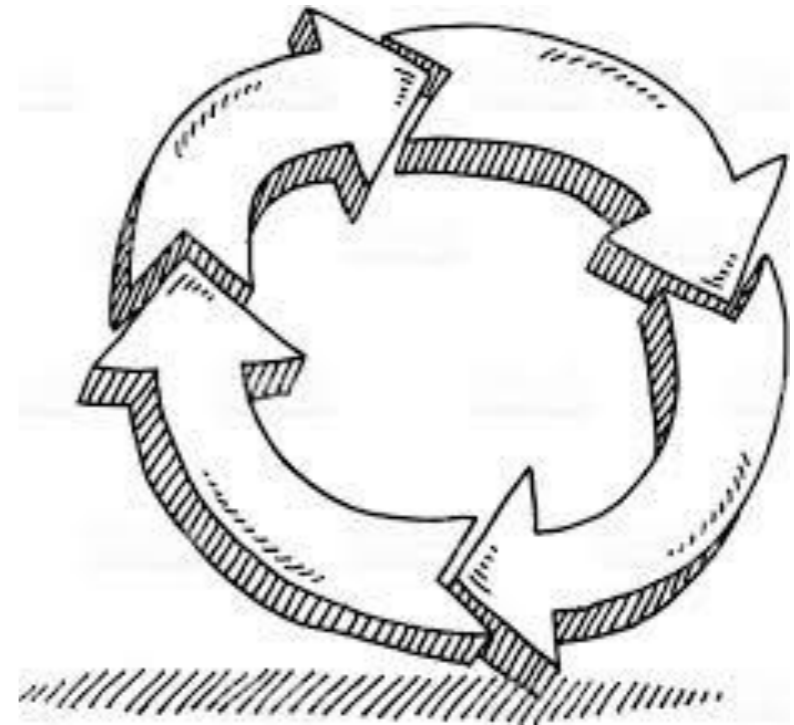
Covering Wisconsin (CWI)

- Offices at UW-Madison and in Milwaukee at Community Advocates
- Since 2003, provide education and assistance with programs that support health
- Navigator entity since 2014 to provide free, in-person health insurance application assistance
- Develop materials and train professionals on health insurance literacy topics

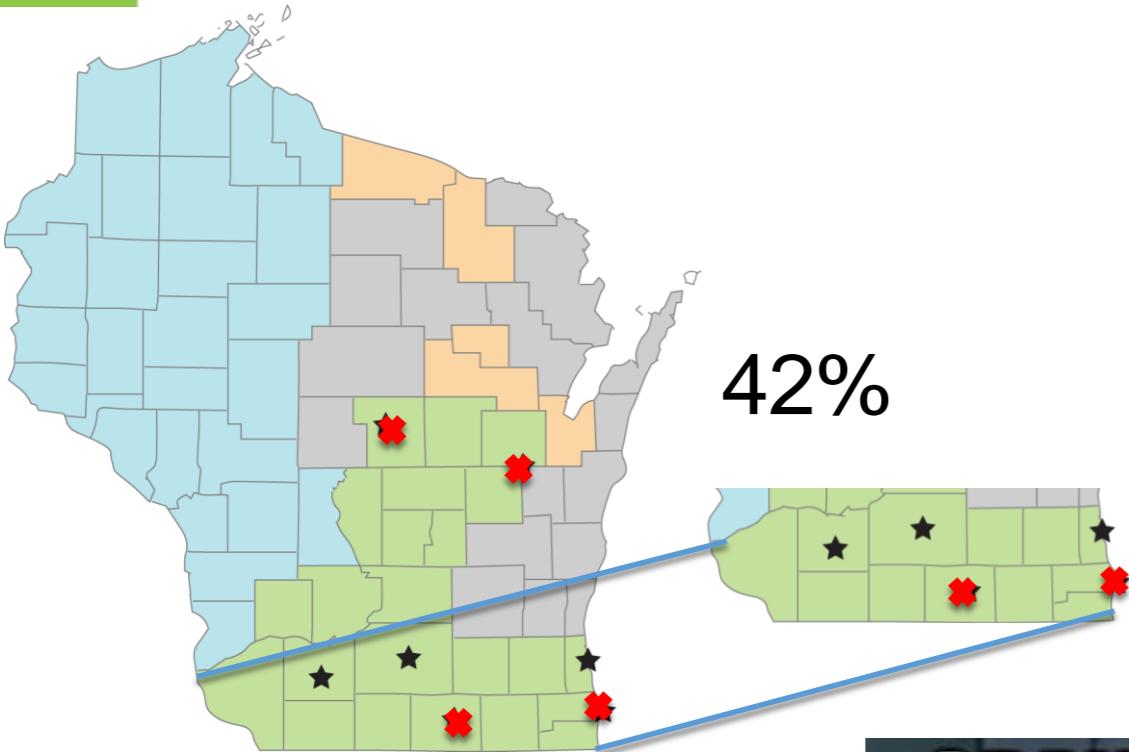


Key Take-Aways

1. Build **longstanding** relationships with people and organizations who support your work (and your work supports their work)
2. Practice asking for money
3. Consider all funding options

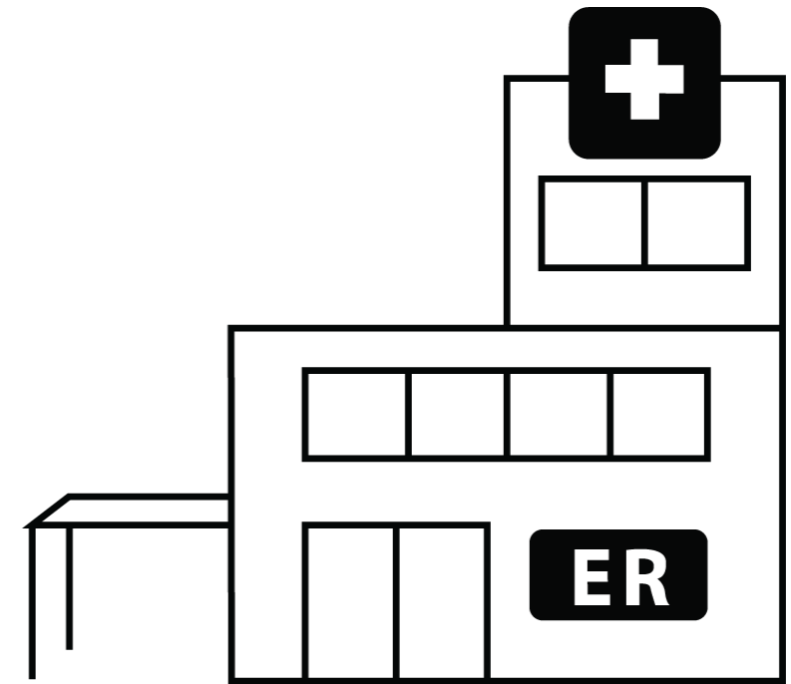


Problem(s)



Finding Money – who supports our work?

- Health Systems
- Health Plans
- Community Organizations
- Local Officials/Government



Who are our champions?



Finding More Money... WIDHS relationship

A story about an relationship:



covering
Wisconsin
Connect to Care, Engage in Health

Relationships Make Our Work Possible



Results

- With the support from the City of Madison, Dane County, and Milwaukee Healthcare Partnership we were able to maintain our 12-county Navigator service area at almost full capacity through June 2018.
- With anticipated federal match dollars through our WIDHS relationship we will be able to maintain our full Navigator capacity through September 2018.
- We have confirmed commitment with partners in our service area for the need of our role serving consumers and providing expertise related to access and understanding of health insurance...

Stay tuned!