



saint louis
INTEGRATED
HEALTH NETWORK

Re-Entry Community Linkages (RE-LINK)

Phillip Brooks

Certified Community Health Worker, Offender Workforce Development Specialist

The St. Louis Integrated Health Network, through collaboration and partnership, will strive for quality, accessible and affordable healthcare services for all residents of Metropolitan St. Louis, with an emphasis on the medically/socially underserved.

St. Louis Integrated Health Network

ABOUT IHN

A non-profit membership health intermediary organization that collaborates with community health centers, public health departments, hospital systems, academic medical institutions and other safety net organizations to advance its mission.

The IHN **acts as a convener and facilitates partnerships** across the safety-net system toward the common goal of **advancing health equity** by increasing healthcare access and quality for the medically under-served.

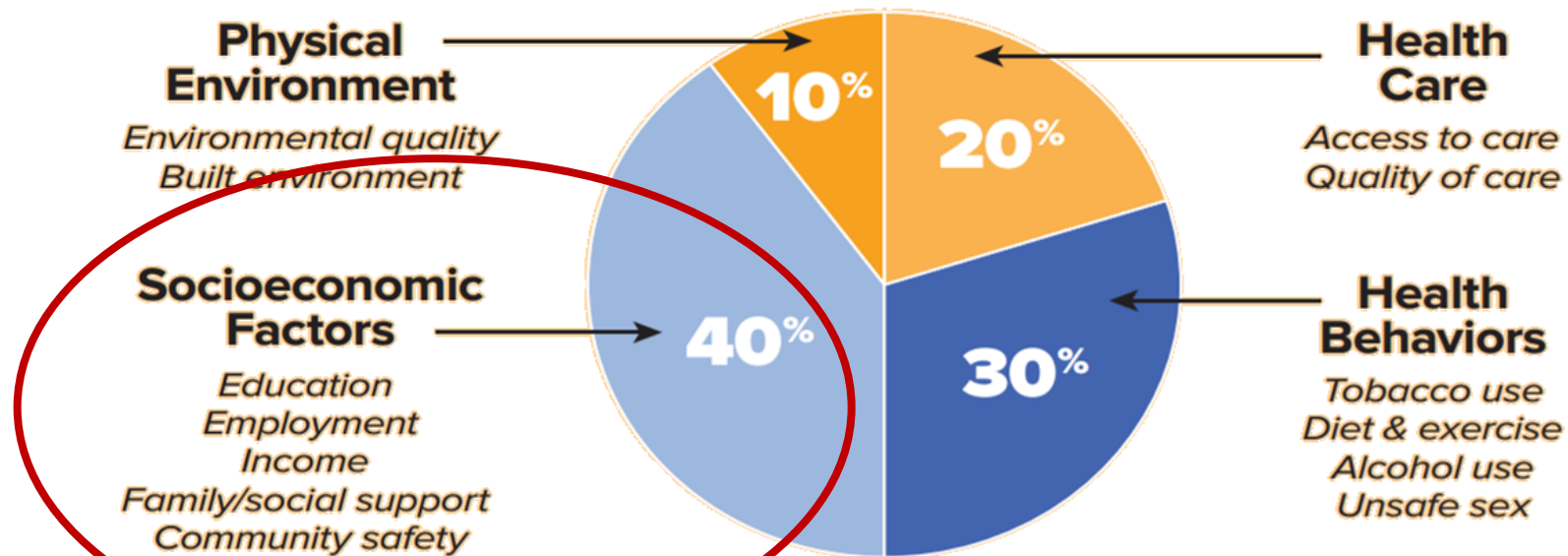
Facilitating Access to Resources

- Healthy People 2020 has featured the IHN's Community Referral Coordinator (CRC) Program in their sharing library of "Who's Leading the Leading Health Indicators?" as a national best practice.
- The CRC program is working towards Healthy People's goal of improving access to comprehensive, quality health care services.
- The CRC (1) meets non-emergent and/or admitted Hospital patients to provide education regarding availability of primary, specialty, behavioral health and urgent care services; (2) offer patients a choice of primary care homes; and (3) assist with scheduling follow-up appointments and arranging transportation/support services as needed.
- This same approach has been utilized in addressing crime prevention in the Re-Entry Community Linkages (RE-LINK) and Community Health Worker (CHW) model

Community Health Workers (CHWs) are trusted, knowledgeable frontline **health** personnel who typically come from the **communities** they serve. CHWs bridge cultural and linguistic barriers, expand access to coverage and care, and improve **health** outcomes.

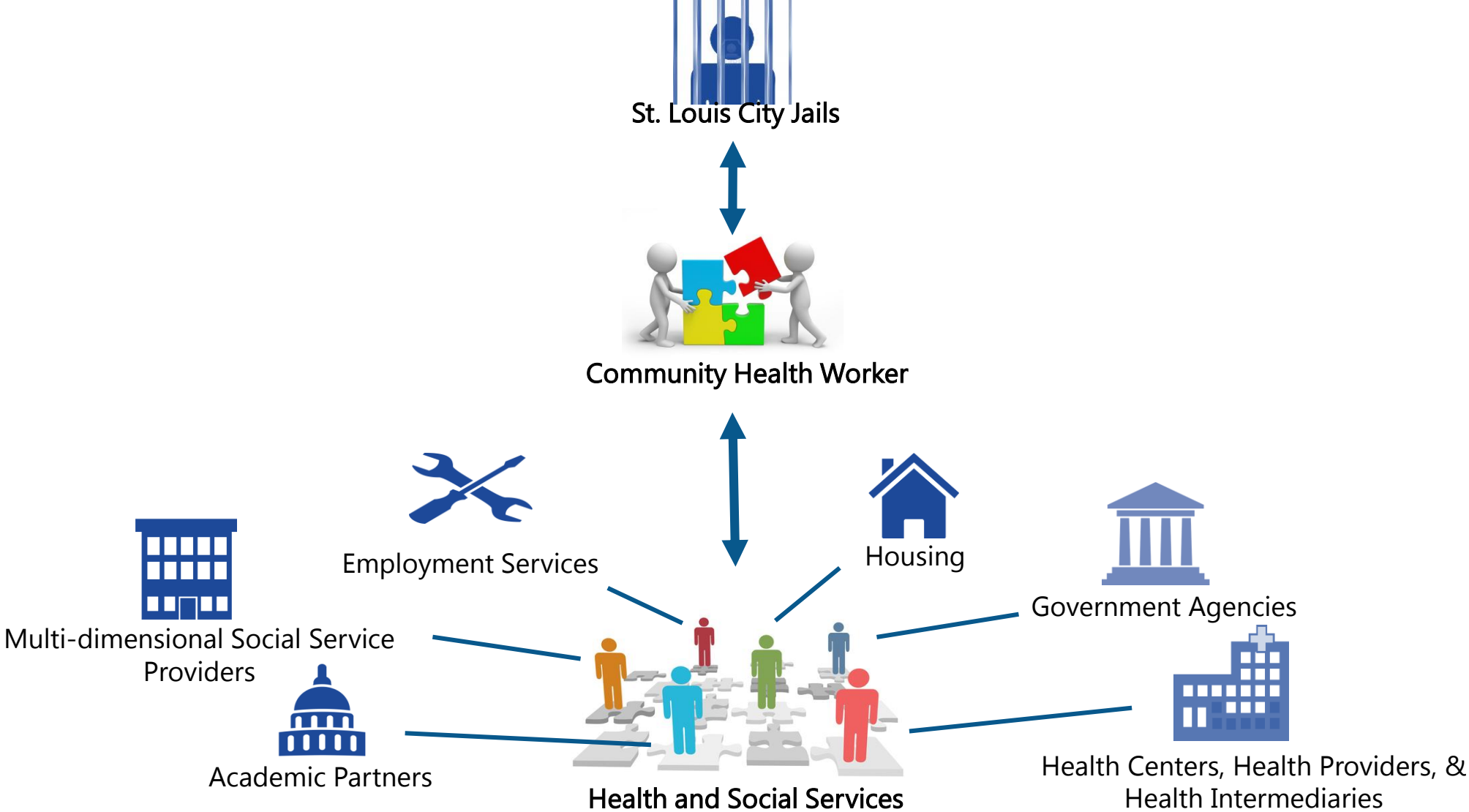
~~CRIMINOGENIC RISK FACTORS~~

SOCIAL DETERMINANTS OF HEALTH

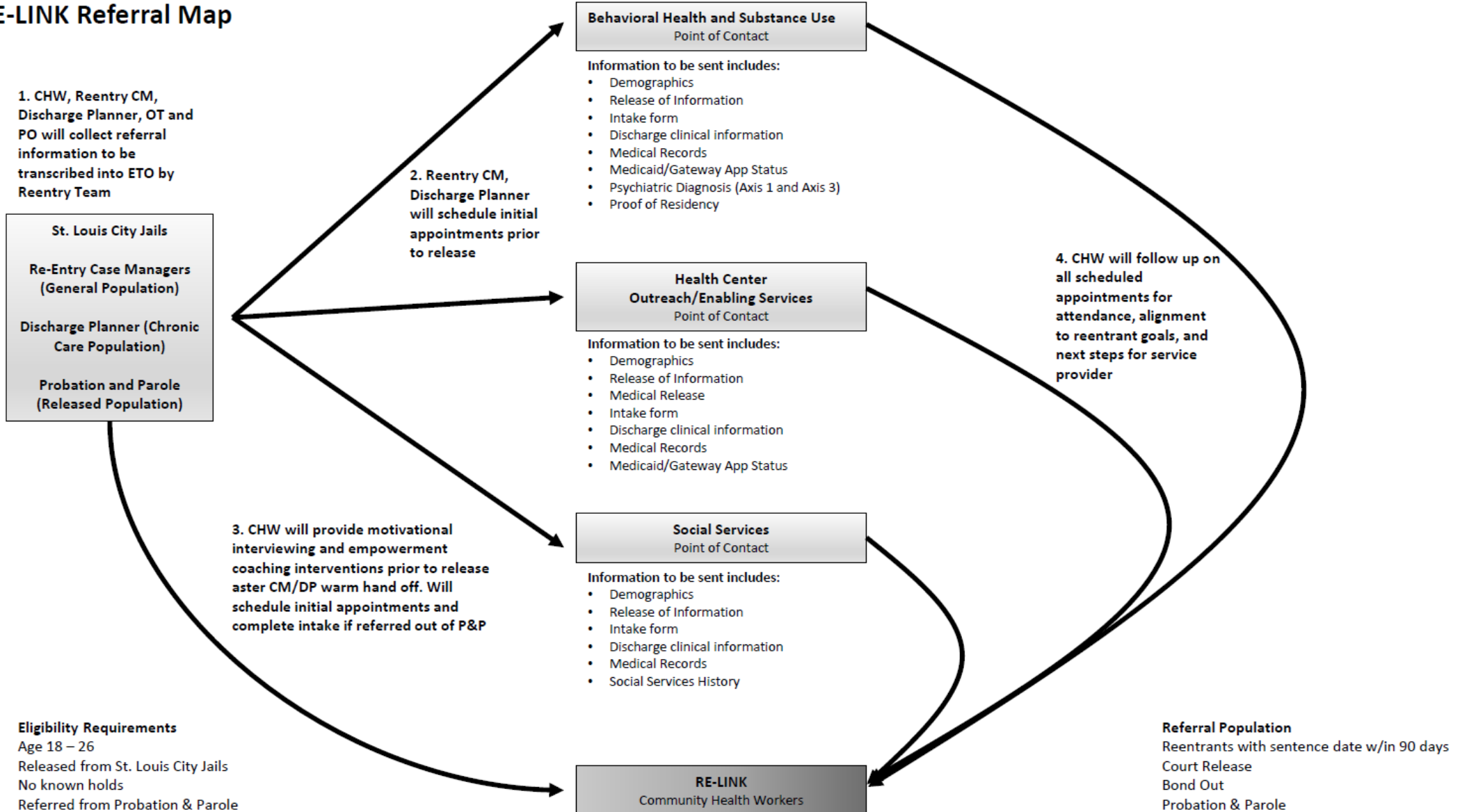


Source: Analysis and adaptation from the University of Wisconsin Population Health Institute's *County Health Rankings* model ©2010. <http://www.countyhealthrankings.org/about-project/background>

THE SYSTEM NAVIGATION MECHANISM



RE-LINK Referral Map



QUESTIONS

The St. Louis Integrated Health Network, through collaboration and partnership, will strive for quality, accessible and affordable healthcare services for all residents of Metropolitan St. Louis, with an emphasis on the medically underserved.

APPENDIX

The St. Louis Integrated Health Network, through collaboration and partnership, will strive for quality, accessible and affordable healthcare services for all residents of Metropolitan St. Louis, with an emphasis on the medically underserved.

Health and Social Services Network (HSSN)

Government Agencies

- City of St. Louis
- City of St. Louis Mayor's Office
- Senator Claire McCaskill's Office
- Missouri Board of Probation and Parole
- City of St. Louis Department of Health
- Department of Corrections/St. Louis City Justice Center including Corizon and SLU OT program

Health Centers and Health Service Providers

- Myrtle Hilliard Davis Comprehensive Health Centers
- Family Care Health Centers
- Betty Jean Kerr People's Health Centers
- Affinia Healthcare
- Preferred Family Healthcare/Bridgeway Behavioral Health
- People's Community Action Corporation
- Places for People

Health and Social Services Network (HSSN)

Health Intermediaries

- Behavioral Health Network of Greater St. Louis
- Saint Louis Mental Health Board

Housing

- Criminal Justice Ministry

Employment Services

- Connections to Success
- Employment Connection

Multi-dimensional Social Service Providers

- Fathers' Support Center
- The SPOT
- Mission St. Louis
- Center for Women in Transition

Academic Partners

- Washington University Evaluation Center
- SMART Decarceration Initiative
- St. Louis Alliance for Reentry

RE-LINK's Comprehensive Staff

St. Louis Integrated Health Network

Bethany Johnson-Javois, CEO

Jessica Holmes, Principal Strategist –
Alignment, Innovation, Growth

Amanda Stoermer, Outcomes and
Information Manager

Casey Peetz, HR & Office Manager

Sagar Mehta, Health Equity Fellow

Mikel Whittier, RE-LINK Program Manager

Atara Estes, Community Health Worker

Phillip Brooks, Community Health Worker

Washington University in St. Louis (Evaluation Team)

Nancy Mueller, Network Evaluation
Lead

Carrie Pettus-Davis, Co-Lead

Bobbi Carothers, Senior Data Analyst

Sarah Bobmeyer, Evaluator

Mackenzie Staub, Project Coordinator

Annie Grier, Content Consultant

RE-LINK's Jail Partners

Robin Edwards, Program Director

Jennifer Davis, Reentry Case Manager

Markeisha Franklin, Reentry Case Manager

Michelle Wayman, Corizon Discharge Planner

Brittany Conners, SLU Occupational Therapist

Christine Hayes, SLU Occupational Therapist