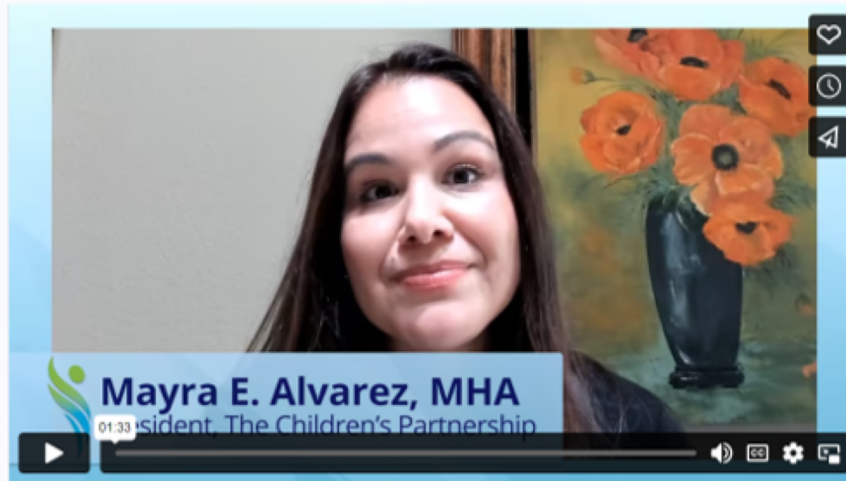




Demoliendo los estigmas: Cuidar a los sobrevivientes de la violencia doméstica y abordar la salud mental en las comunidades latinas

8 de diciembre de 2022



Video

Examining How COVID-19 Impacts Children in Communities of Color

► Read More



Post

Annual Meeting Highlights Essential PCORI Values

Post

PCORI approves \$96 million for research on mental health, delirium, adolescent alcohol use among other conditions

<https://www.pcori.org/>

Nuestro informe

- [“Opportunities for whole health promotion: research and examples”](#) by Cheryl Fish-Parcham & Zoe Torrey

Whole Health Includes:



Presentamos a Jennifer Haddad Bell, MTP

Consultora de programas en Futures Without Violence

Pronombres: ella/la



- Investigación: Desarrollo de un paradigma de tratamiento innovador para víctimas de violencia de pareja íntima con depresión y dolor utilizando investigación participativa basada en la comunidad
- <https://www.ncbi.nlm.nih.gov/pmc/articles/PMC6944275/>
- <https://statics.teams.cdn.office.net/evergreen-assets/safelinks/1/atp-safelinks.html>

Presentamos a Juan Prandoni, PhD, HSP
Director de capacitación en El Futuro
Pronombres: él, lo



- Investigación: Fomento de la activación entre padres latinos de niños con necesidades de salud mental: un ensayo de control aleatorio
- <https://doi.org/10.1176/appi.ps.201600366>



DEMOLIENDO LOS ESTIGMAS: CUIDAR A LOS SOBREVIVIENTES DE LA VIOLENCIA DOMÉSTICA

8 de diciembre de 2022



Comprender la intersección entre la violencia doméstica y la salud

7

- Al menos 1 de cada 4 mujeres experimenta violencia doméstica
 - Más situaciones desde la pandemia
- La violencia doméstica es un problema de **salud pública nacional** (y costoso) y un determinante social de la salud
- Los impactos en la salud están bien documentados, y afectan a adultos y niños:
 - Salud general
 - Salud mental/conductual
 - Salud sexual/reproductiva y embarazo/nacimiento
 - Resultados generales



Estrategias centrales hacia violencia doméstica y asociaciones de atención médica

8

- **Conocer a sus médicos**
- **Formalizar un memorando de entendimiento**
 - Aclarar los objetivos y funciones de la asociación.
 - Establecer procedimientos para sistemas coordinados de atención centrados en los sobrevivientes
- **Desarrollar un sistema para referencias cálidas bidireccionales**
 - Pacientes que experimentan violencia doméstica → Servicios de apoyo de violencia doméstica
 - Sobrevivientes → Atención médica y atención de salud mental/conductual
- **Incorporar la defensa en la salud en los servicios en curso**
 - Evaluación de salud de rutina
 - Servicios de ubicación compartida o servicios clínicos basados en refugios
 - Educación en refugios
- **Proporcionar/participar en capacitación continua**



Herramientas y recursos

9

Desarrollo de asociaciones, recursos de apoyo y kits de herramientas en línea

www.ipvhealthpartners.org/

www.dvhealthpartnerships.org/

Centro Nacional de Recursos de Salud sobre violencia doméstica (*comprar para ordenar materiales, tarjetas de seguridad, etc.*)

www.futureswithoutviolence.org/health/

Lecciones aprendidas sobre el apoyo centrado en los sobrevivientes durante el COVID-19

Pandemia: Recomendaciones para defensores de IPV

https://www.futureswithoutviolence.org/wpcontent/uploads/FWV_SurvivorCenteredSupport_brief.pdf

CUES infografía/cartel

https://drive.google.com/file/d/1_BQ2wdFJ5Ns0CPy2CidFpfi227GDIIIz/view?usp=sharing

Videos de capacitación de FUTURES para profesionales y defensores de la salud

<http://www.futureswithoutviolence.org/health-training-vignettes/>



¡Gracias!

10

Jennifer Haddad Bell

jhaddad@futureswithoutviolence.org





El Futuro's Efforts to Address Health Needs in the Latine Community



Presented by
Juan Prandoni, PhD, HSP-P



Padres Efectivos Intervention

PCORI & Padres Efectivos

Thomas et al., 2017

What is Padres Efectivos?

- **Who?** PCORI funded collaboration between El Futuro, UNC-CH School of Public Health and UNCG Clinical Psychology Department.
- **What?** Culturally adapted a manualized parent activation psychoeducational group for Latine caregivers to improve skills in:
 - Navigation of US systems (i.e., educational; medical; psychological)
 - Understanding of parental roles/rights
 - Problem solving to overcome barriers
 - Communication and relaxation strategies
- **When?** Initially delivered as a RCT in 2015-2015; later disseminated in the community by El Futuro in 2019

Padres Efectivos Overview

Thomas et al., 2017

- **What does Padres Efectivos look like?**

- Four weekly 1-hour discussion group sessions
- 5-8 parents per group
- Conducted in Spanish only
- Includes role plays, homework, parent-to-parent support in every session
- Incorporates relaxation breathing and progressive muscle relaxation into last session

Padres Efectivos Overview

Thomas et al., 2017

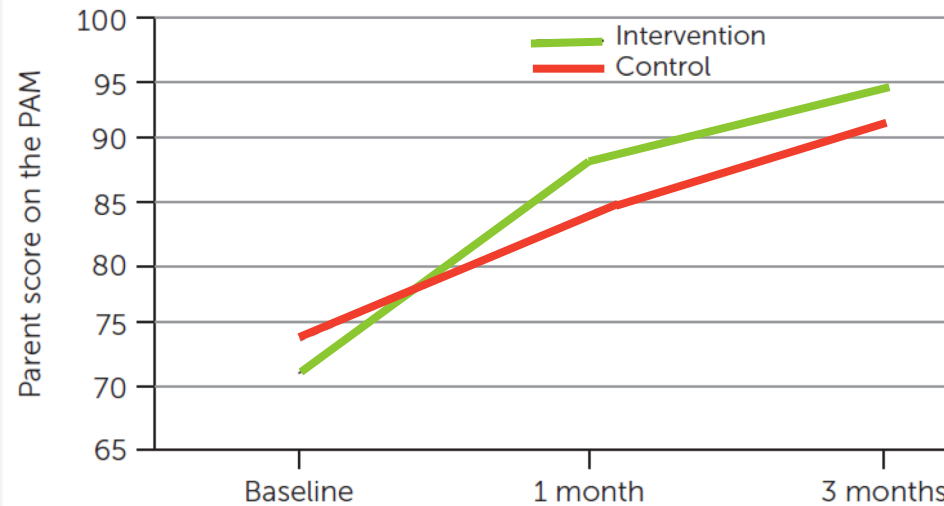
- **Primary Activation Skill: MePrEPA**
 - **Me** = Metas (Goals)
 - **Pr** = Preguntas (Questions)
 - **E** = Explicar - dar contexto a su pregunta (Explain)
Escuchar Abiertamente (Listen Openly)
Entender (Understand)
 - **P. A.** = Preguntar para Aclarar (Asking clarifying questions)

Padres Efectivos Overview

Thomas et al., 2017

- **Results:**

FIGURE 1. Adjusted mean scores on the Patient Activation Measure (PAM) at each time point among Latino parents with a child receiving mental health services, by treatment group^a



^a Possible scores range from 0 to 100, with higher scores indicating greater activation.

Padres Efectivos Dissemination in the Community

- **Schools:** Durham Public Schools, Orange County Schools, Chapel Hill Carrboro School District
- **Community Entities:** Immaculata Catholic Church, Orange County Rape Crisis, El Centro Hispano, Center for Child and Family Health, East Durham Children's Initiative, Holy Family Catholic Church
- **Some Numbers:** 10 groups/40 sessions, serving 62 parents in 2 counties, in less than 3 months

**El Futuro and La Mesita's
Work to Improve the Health of
the Latine Community**

El Futuro & La Mesita

El Futuro Clinical Services:

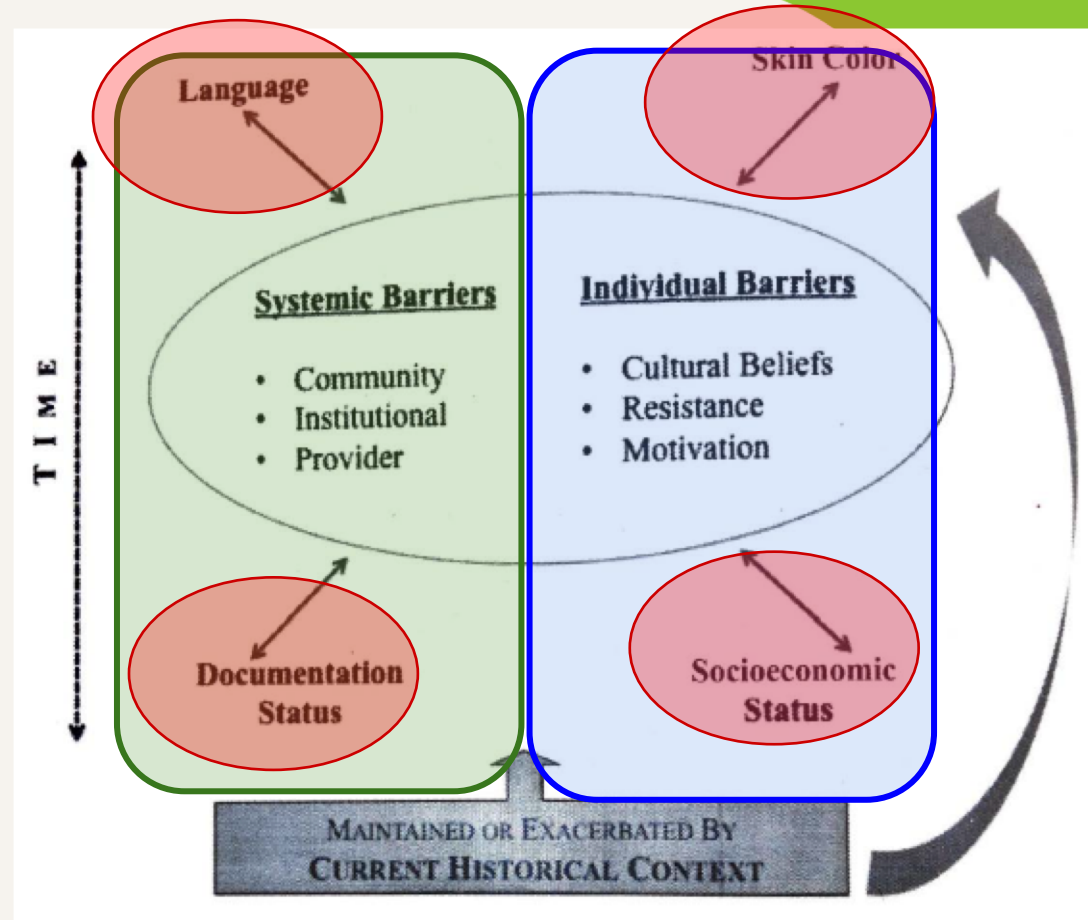
- Direct fully bilingual therapy, case management, and psychiatry.
- Hybrid model of care with telehealth program for migrant farmworkers

La Mesita:

- El Futuro's effort to improve provider capacity across NC to serve the Latine community
- Free or low cost CE training opportunities and consultation services centered around **culturally responsive mental healthcare**
- Professional provider network to increase connection and reduce burnout

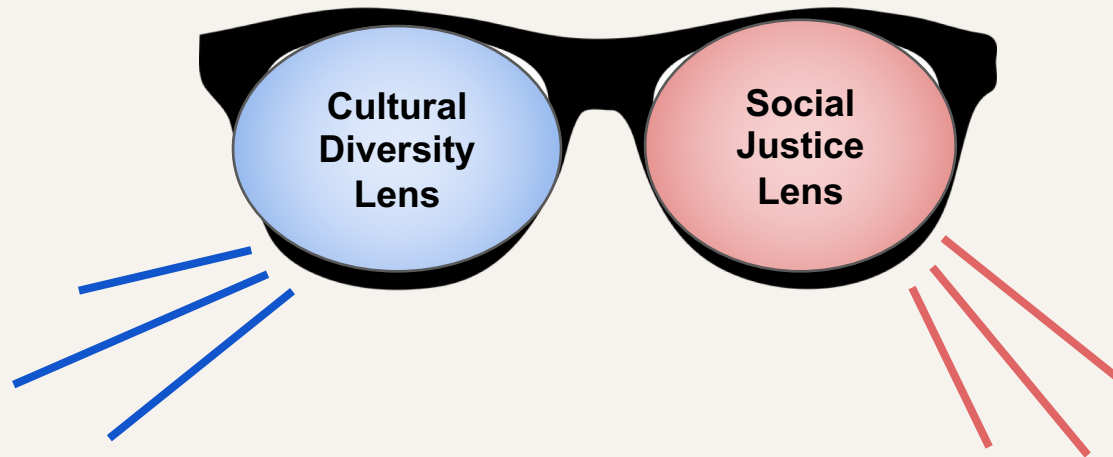
Theoretical Approach to Our Work

- **Systemic and Individual Barriers Model (SIB)** (Chaves-Dueñas et al., 2011)



Theoretical Approach to Our Work

Falicov, 2014



- Family Organization
- Family Life Cycle

**Internal Cultural
Landscape**

- Migration & Acculturation
- Ecological Context

**External Cultural
Landscape**

Overall Takeaways For Our Audiences

- Good to have some awareness of culture and context, but not the most important thing
- Better to balance knowledge with a **culturally humble** approach and ask questions to get to know the human being(s) in front of you.
- Moving away from a **deficit model** focused on “what is wrong”
- Using a **strengths-based approach** focused on “what is going right” “what has worked in the past” and “harnessing the protective aspects of Latine culture in therapy”

Questions/Preguntas?

Don't Miss Families USA's Health Action Conference!

- Held in-person in Washington, DC and virtually **Jan 26-28, 2023**
- Learn more and register: <https://familiesusa.org/our-work/health-action-conference/>
 - Registration rates go up starting Jan 1 – book now for the best price!
 - Group discount – groups of 3 or more get 15% off!
- Highlight your work at Health Action!
 - [Partner proposals](#): host a networking event, breakfast roundtable, or virtual call to action! Submit your proposal by **Friday, December 9, 2022**
 - [Health Justice Advocate of the Year Awards](#): Nominate yourself or a colleague by **Friday, December 9, 2022**

THE POWER OF
Community





www.FamiliesUSA.org

1225 New York Avenue, NW, Suite 800
Washington, DC 20005

main 202-628-3030 / fax 202-347-2417